



QUALITY CHANGES THE WORLD

SANY Heavy Machinery Co., Ltd.

Huzhou SANY Loader Industrial Park, Wuxing District, Huzhou City, Zhejiang Province, China

Hotline: +86 4008-28-2318 (Service) / 4008-87-9318 (Support)

<https://www.sanygroup.com>



MySANY

Materials and specifications are subject to change without notice. Featured machines in photos may include additional equipment. See your local dealer for available options please.



Reliable, High productivity & Smart

Rated power: 162 kW@2000 rpm | Operating weight: 17,900 kg | Rated payload: 5,500 kg

Bucket capacity: 2.7-4.0 m³

SW956K1
Wheel Loader



Highlights

Engineered for greater reliability & productivity, the SW956K1 is built of 6-ton class frame, the rated payload reaches 5.5-ton.

6-ton class Transmission

3-pump interflow system

Full-hydraulic braking system

Intelligent Management

Engine and Transmission



Weichai Engine

Electrically-controlled high-pressure common-rail engine with high horsepower, large displacement and high efficiency, jointly developed by Sany and Weichai.

Features

Powerful efficiency, high stability and reliability, economic, fuel-efficient and easy serviceability.



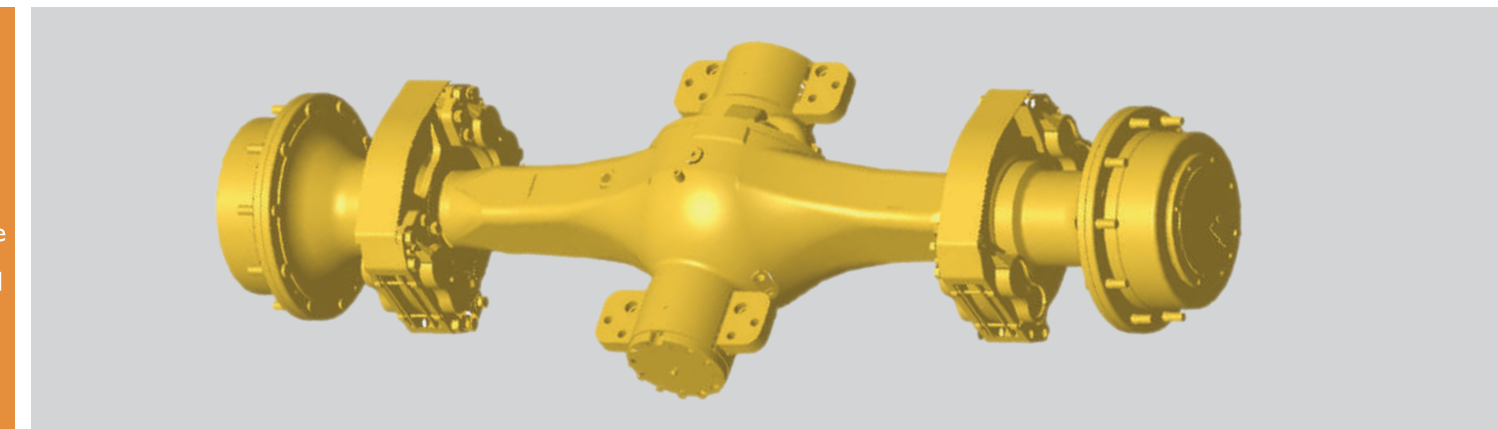
6-ton class Transmission

The larger scale drivetrain system improves the traction force to 175kN and increases travel speed by **10%**, resulting in **15%** increase of productivity.

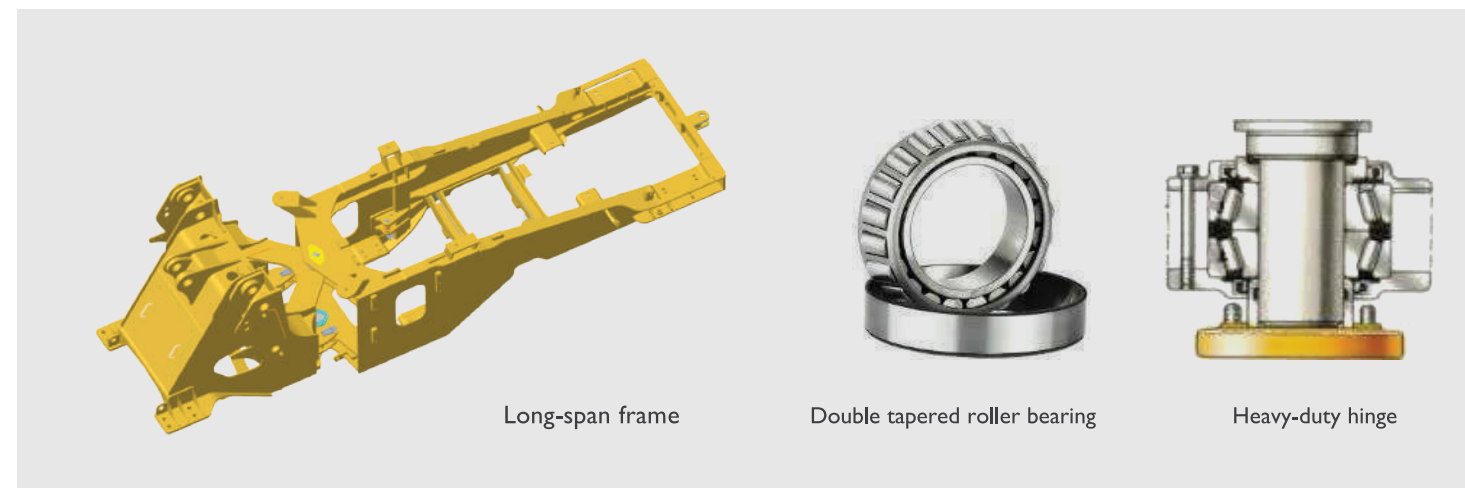
Driving Axle

Heavy-load oscillating axle

Integrated oscillating axle structure has better adaption to heavy load condition, and avoids the faults such as crack of subframe and hinge pin of non-swinging bridge.



Frame



Long-span frame

Double tapered roller bearing

Heavy-duty hinge

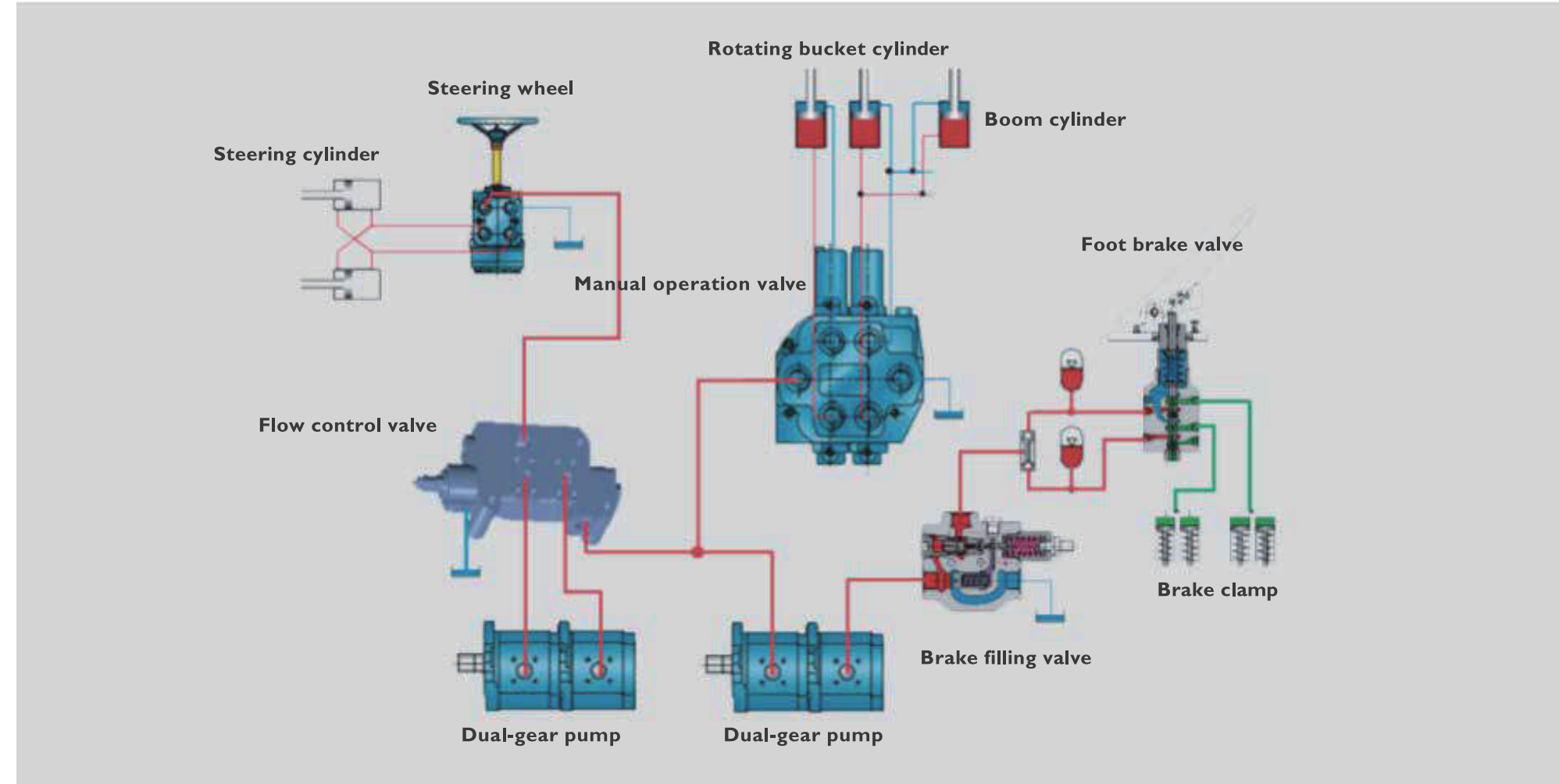
6t platform frame

- 6t platform frame, both of upper and lower hinges are provided with double tapered roller bearing to ensure high bearing capability.
- Long-span hinge structure, ensuring high torsional strength.
- Centered arrangement of hinge.

Hydraulic System

3-Pump Interflow System

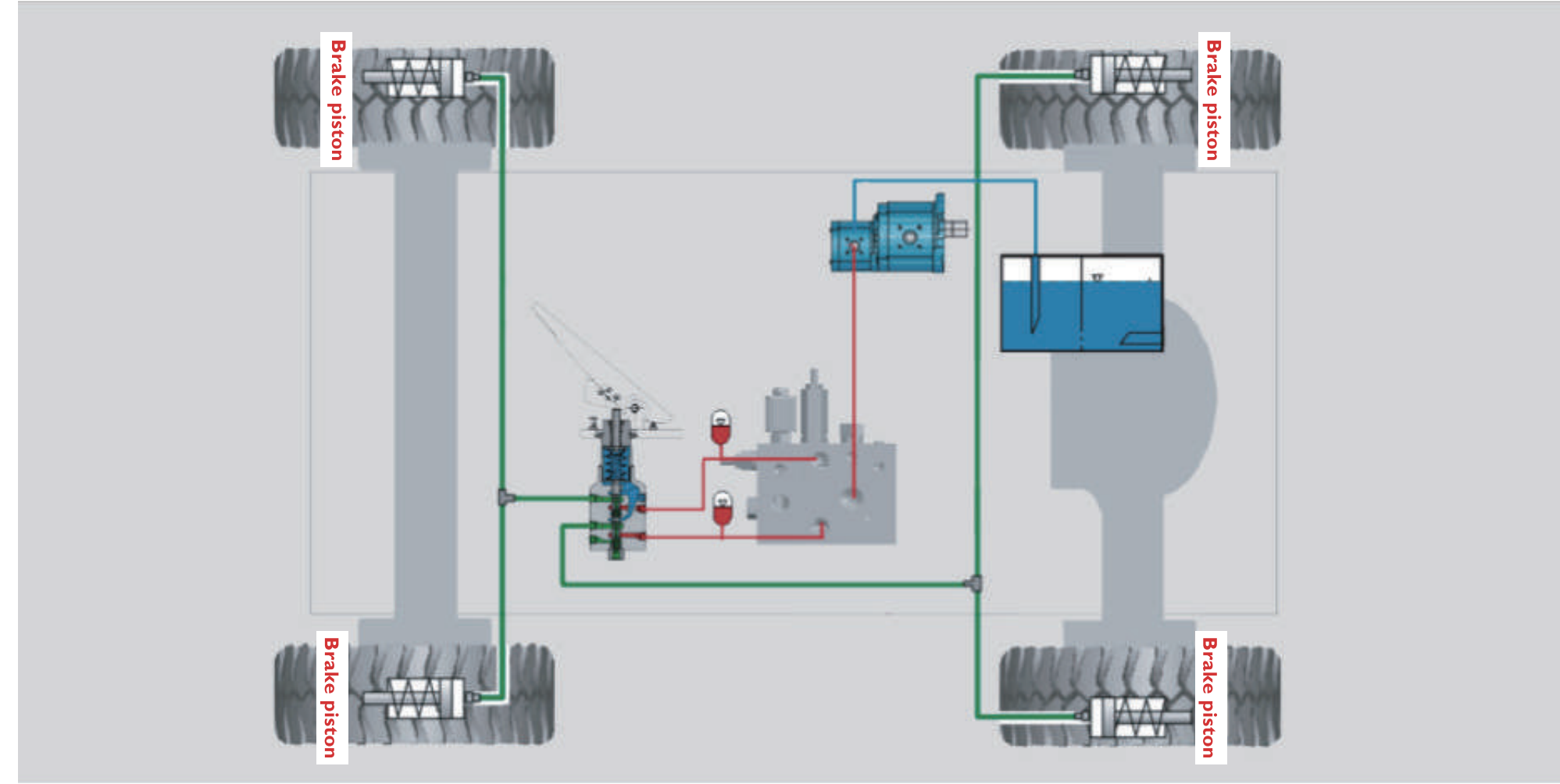
Distribute flow as required, ensure flexible steering in narrow space; ensure higher flow of work device, increase speed by 14%, faster stacking and short-distance loading during bucket loading.



Braking system

Double-pipeline fully-hydraulic brake

Flexible and reliable braking, circulating cooling of hydraulic oil, reduce braking failure due to thermal attenuation, and prolong the service life of hydraulic elements.





Comfortable

- Spacious
- Greater visibility
- Lower noise
- Suspension seat

Cabin



- 9-dimensions adjustable suspension seat
- Ultra-large front/rear adjustment space
- Large-angle adjustment of backrest.



2 air outlets



6 air outlets on the front decoration panel



Pilot Control (Optional)

Easy Service

- One-key service call
- Intelligent diagnosis
- Prompt troubleshooting
- Networking of computer group and easy management.

Intelligent machine group



EVI-Cloud:
Cloud machine group management system of Loader

- Distribution of machine group
- Construction statistics
- Remote service

EVI-APP:
Machine management system for client

- Real-time monitoring of device condition
- One-key service call
- Visible servicing process
- Community forum
- Thermodynamic chart of construction



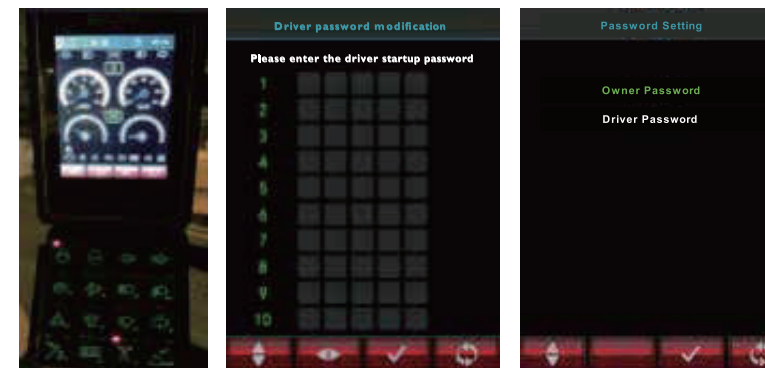
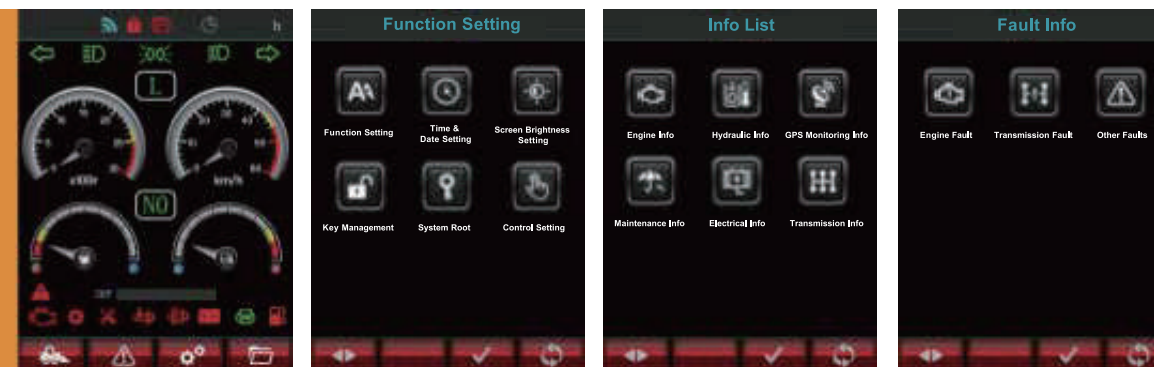
“Easy N” APP:
On-site diagnosis system

- Fault diagnosis
- Wireless debugging and programming

Easy Operation

Intelligent display

- 5.0" TFT display-control integrated display
- GPRS networking, GPS locating
- Real-time operating system, response speed<1ms
- IP65 protection grade, be adapted to severe work condition
- Real-time display of device information



One-key start, key management

- Intelligent startup management system of CAN communication
- Easy to realize easy startup and shutdown, prolong the service life of starting motor and battery.
- ▶ One-key startup, avoid impact or timeout during engine startup, avoid overheating of starting motor and battery over-discharge effectively.
- ▶ Intelligent key management, private customization of owner password, distribution of 10 passwords by owner, to bring higher safety to device.

Intelligent power management

- Intelligent power management and fault diagnosis system of CAN communication
- Pioneering CAN-bus communication control and power management system of Loader at home, to realize overload protection, multi-mode auto fault recognition and alarm.
- ▶ Intelligent power management module, contact-free relay, with overload and short circuit protection, improving the service life by 100 times.
- ▶ Graph + text fault diagnosis, provide direct and accurate display of fault information, ensure convenient and fast troubleshooting.
- ▶ Intelligent, contact-free and multi-function key panel, integrate multiple functions in one keys, enjoy more comfortable operation, simple wiring and reliable use; service life of panel key can reach 300,000 times, far beyond the service life of 40,000 times of rocker switch.



Maintenance



Brakes

Easy maintenance of calipers without dismantling the rims and tires; no brake fluid is required in the fully hydraulic brake system which is lifetime maintenance-free.



Single-layer radiator

Be provided with single-layer radiator for promoting daily cleaning and maintenance



Centralized grease points

The grease fittings are highly concentrated to improve the convenience of maintenance.



Side opening hood

Facilitate inspection and replacement of engine oil and filter element, fuel filter element, air filter element and matched parts

More options

Booms

Dump clearance of 3.1m, 3.4m and 3.6m are optional.

Specifications	Standard boom				Long boom				Super long boom		
Bucket Capacity (m³)	2.7	3.0	3.2	3.5	3.0	3.2	3.5	4.0	3.0	3.2	4.0
Dump clearance (mm)	3297	3126	3126	3001	3423	3423	3423	3321	3624	3624	3522
Operating weight (ton)	18.1	17.9	17.9	18.1	18.1	18.1	18.1	17.9	18.1	18.1	18.1

*Detailed configuration is subject to the product sold



Attachments

3.0m³ (Bucket , bolt-on teeth)	3.0m³ (Bucket , weld-on teeth)	3.2m³ (Bucket , cutting edge)	3.5m³ (Bucket , weld-on teeth)	3.5m³ (Bucket , cutting edge)
2.7m³ (Rock bucket)	4.0m³ (Enlarged bucket)	Side dumping bucket	Pallet Fork	Grapple

Technical specifications

Engine		Transmission system	
Engine	Weichai	Torque converter & transmission	Planetary powershift transmission
Model	WPI10G220E343		
Type	Inline 6-cylinder,turbo-charged with direct Injection, meet China Stage III emission requirements.	Traveling speed	Forward I 13
Rated power/rated rpm	162kW@2000r/min	(km/h)	Forward II 40
Number of cylinders × cylinder bore × stroke	6 × 126mm × 130mm		Reverse I 17
Maximum torque	980Nm		

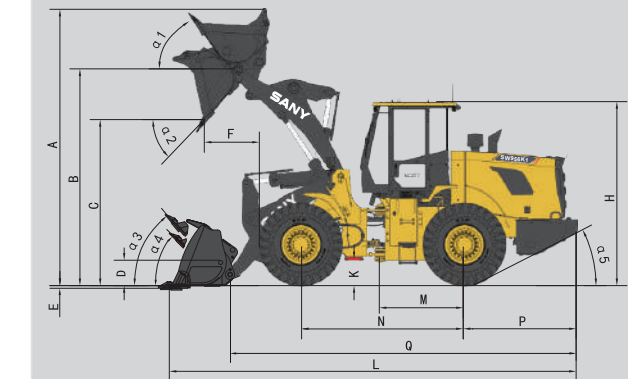
Work hydraulic system		Steering hydraulic system	
3-pump interflow, quantitative hydraulic system		2-pump interflow, load sending and full hydraulic hinged steering	
Working pump	Gear pump	Steering pump	Gear pump x2
Flow/ rotation speed	80L/min@2000r/min	Flow/ rotation speed	103L/min@2000r/min
Total cycling time (s)	≤10.5	Articulation angle	±35

Front drive axle and tires		Braking system	
Drive axle type	Heavy-load oscillating axle	Service brake	full hydraulic caliper disc brake
Tire specification	23.5-25 16 PR	Parking brake	Mechanical flexible shaft drum brake
Tire pressure	Front/rear wheel: 0.39/0.3Mpa		

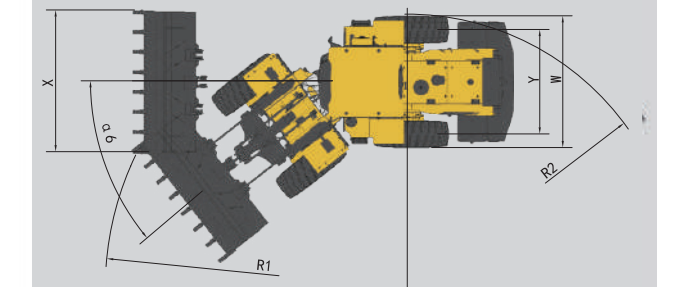
Service Refill Capacities			
Fuel tank	290L	Hydraulic oil tank	220L
Cooling system	45L	Front Axle oil	29L
Torque converter & transmission system	45L	Rear Axle oil	29L

Specifications	SW956KI
Forward speed at gear I (Km/h)	0~13
Forward speed at gear II (Km/h)	0~40
Total cycling time (s)	≤10.5
Breakout Force (kN)	≥175
Max. traction force (kN)	≥175
Articulation angle (°)	35
Dump clearance (at 45°-fully raised) (mm)	3126
Dump reach (at 45°-fully) raised (mm)	1140
Turning radius to outside of tires (mm)	6640±50
Static tipping load (Full turn) (kN)	115
Static tipping load (Straight) (kN)	125

Item (mm)	SW956KI
A. Overall height with bucket at Maximum lift	5235±50
B. Hinge pin height (fully raised)	4080±50
C. Dump clearance (at 45°-fully raised)	3126±50
D. Hinge pin height (at carry position)	450
E. Digging depth	30
F. Unloading distance	1140±50
H. Overall height (Rops cab)	3550±50
K. Ground clearance	500
L. Overall length, Bucket on Ground	8270±50
M. Length from Centerline to Rear Axle	1700
N. Wheel base	3300
P. Center Line Rear Axle to Edge of Counterweight	2210±50



Item (mm)	SW956KI
Q Length from bucket hinge shaft to Edge of counter weight (mm)	6800±50
α1 Roll back angle, Boom fully raised	60°
α2 Max. dump angle, fully raised	45°
α3 Roll back angle at carry position	49°
α4 Roll back angle at ground level	45°
α5 Departure angle	28°
α6 Articulation angle	±35°
W Width over tires (mm)	2795±50
X Bucket width (mm)	3000
Y Tread (mm)	2200
R1 Turning radius to outside of bucket (mm)	7300±50
R2 Turning radius to outside of tires (mm)	6650±50



Note: Due to constant update of technique, the material and technical specification are subject to a change without a prior notice. The machine in picture may include the attached devices.

Technical specifications

● Standard Equipment		○ Optional Equipment	
Engine	Cab	Hydraulic system	Implement System
Starting motor ●	Sound-proof steel structure cab ●	Mechanical Control ●	Flange pin ●
AC motor ●	Reinforced light-colored glass window ●	Control valve with main overflow valve ●	Welded connecting rod ●
Air filter ●	Four supports of silicone oil rubber damper ●	Double-pipeline hydraulic crane brake ●	Lubrication system ●
Dual-core air filter ●	Openable right-side window ●	Air filter ●	All bucket pins equipped with dustproof seal ring ●
Cylinder engine oil filter ●	Emergency exit of right door ●	Return oil filter ●	Reinforced plate-type movable arm ●
Cylinder fuel oil filter ●	Windscreen wiper with cleaner ●	Brake filter ●	Reinforced plate-type rocker arm ●
Engine oily water cooler ●	Adjustable reclining seat with adjustable handrail ●	Viewing port of hydraulic oil level ●	Toothed holder and sleeve wear-resisting dipper teeth ●
Radiator with protective screening ●	AM-FM radio with digital clock ●	Pilot control (Single axis lever) ○	Standard Bucket, 3.0 m ³ with teeth ●
Auxiliary water tank of radiator ●	Beacon ○		
Fan wind scooper ●	Loudspeaker and rearview mirror ●		
Display of fuel oil level ●	Fire extinguisher ●		
	Drinking cup holder and interior lamp ●		
	Ashtray and escape hammer ●		
	Storage box and sundry bag ●		
	Cold and warm air conditioning ●		
	Sun shade ●		
	Mechanical suspension seat ●		

● Standard Equipment		○ Optional Equipment	
Drivetrain	Alarm display	Instrument of monitoring system	Others
Intermediate support of heavy-duty drive shaft ●	Low engine oil pressure and overheating of motor cooling fluid ●	Oil level display of fuel tank ●	Standard battery(2x12V,2x120Ah) ●
Planetary transmission ●	Battery undervoltage ●	EVI mobile APP ●	Lockable roof cover ●
Mechanical gear shifting ●	Fuel oil shortage ●	Function setting ●	Portable fuel oil filling cover ●
Split clamp disc brake ●	High oil temperature of gearbox ●	Fault information ●	Anti-slip pedal, handrail and sidewalk ●
Rear drive axle of swinging structure ●		System setting ●	Tool kit ●
		Maintenance information ●	
		Information of various systems ●	
		Password setting ●	



Service Outlets/Spare Parts Warehouse

Service Network in China

Service Hotline 4008 28 2318

Complaints Hotline 4008 87 9318

Spare Parts Warehouse

535
535 spare parts warehouses
10,000
Over 10,000 kinds of spare parts

500 Million- RMB
Spare parts stock amounting to 500 Million- RMB

Service Outlets

600
600 Service outlets
2000
2,000 service engineers overseas

