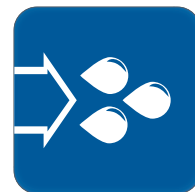


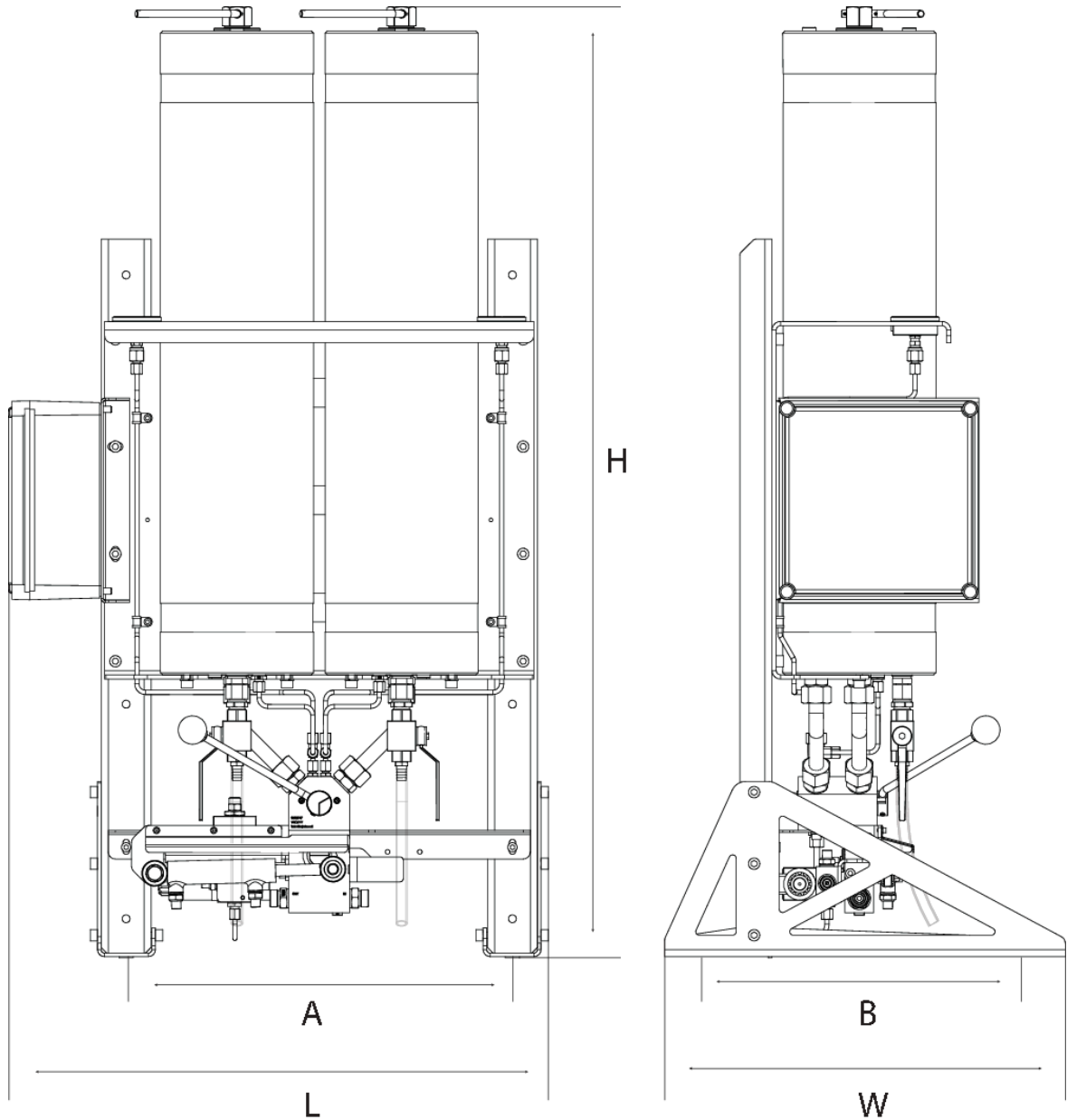
DATASHEET

HAC HYDRAULIC ABRASIVE CUTTING SYSTEM

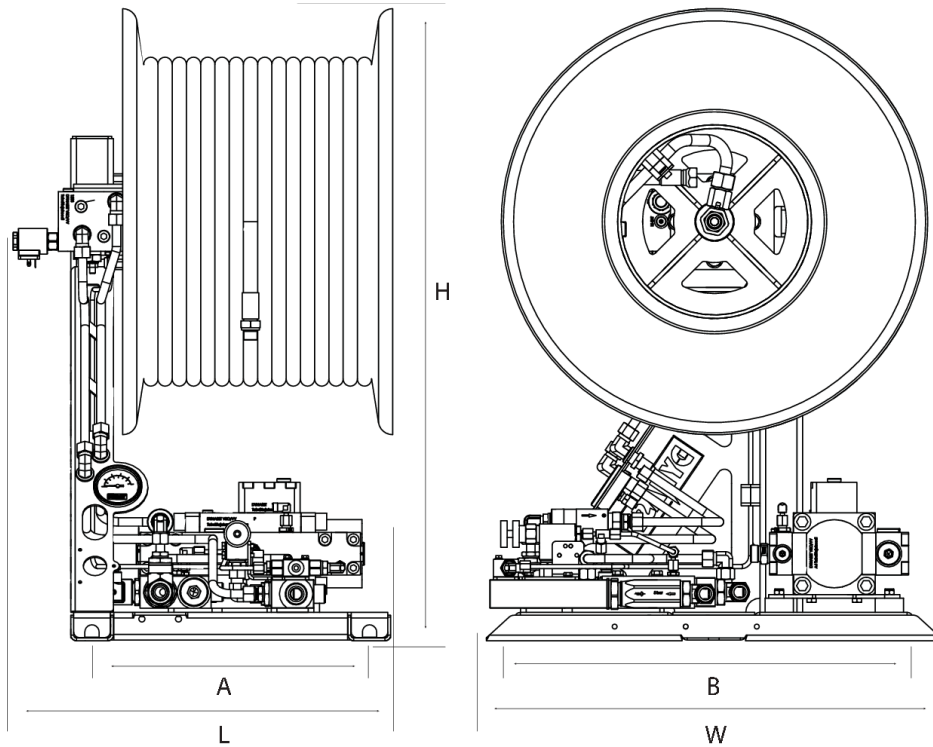


HAC-320-2x20

1. DIMENSIONS

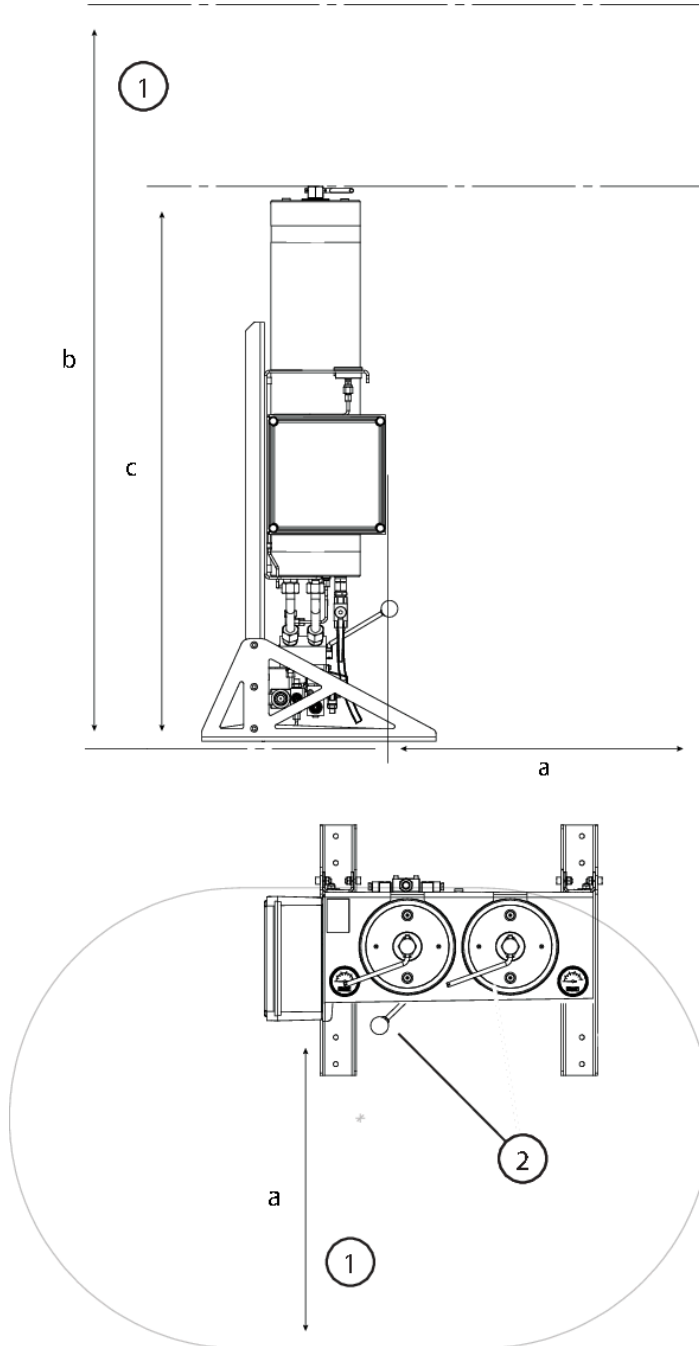


Model	Dimensions, mm (in)			Weight		
	Length	Width	Height	A	B	kg (lbs)
HAC-320-2x20	810 (31.9)	560 (22.0)	1,328 (52.3)	550 (21.7)	510 (20.1)	250 (552)



Model	Dimensions, mm (in)					Weight
	Length	Width	Height	A	B	kg (lbs)
HAC-PPL	531 (20.9)	640 (25.2)	890 (35.0)	390 (15.4)	600 (23.6)	207 (457)

OPERATOR AREA

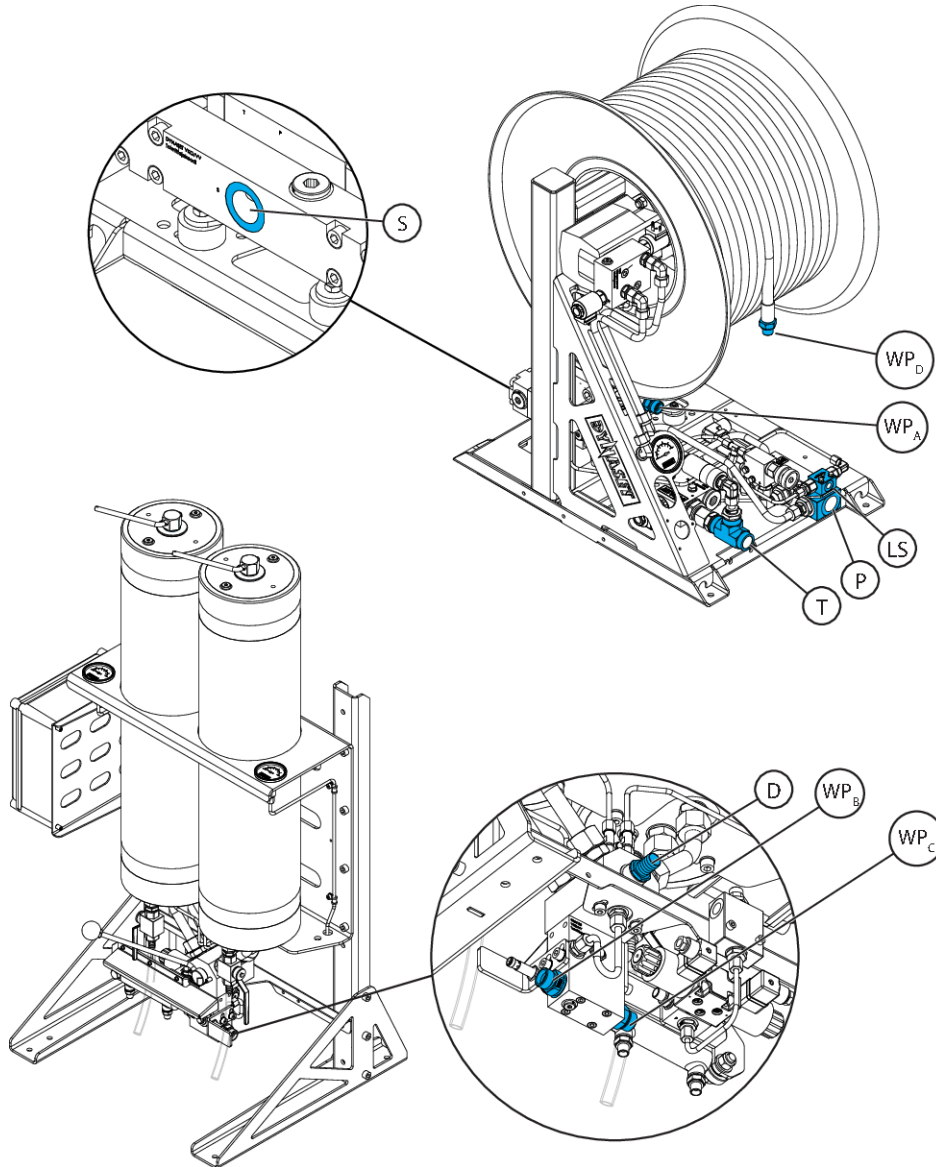


1 = Keep the operator area clear!

2 = Operating lever: choose container to fill up/abrasive feed. Operator fill up the the containers.

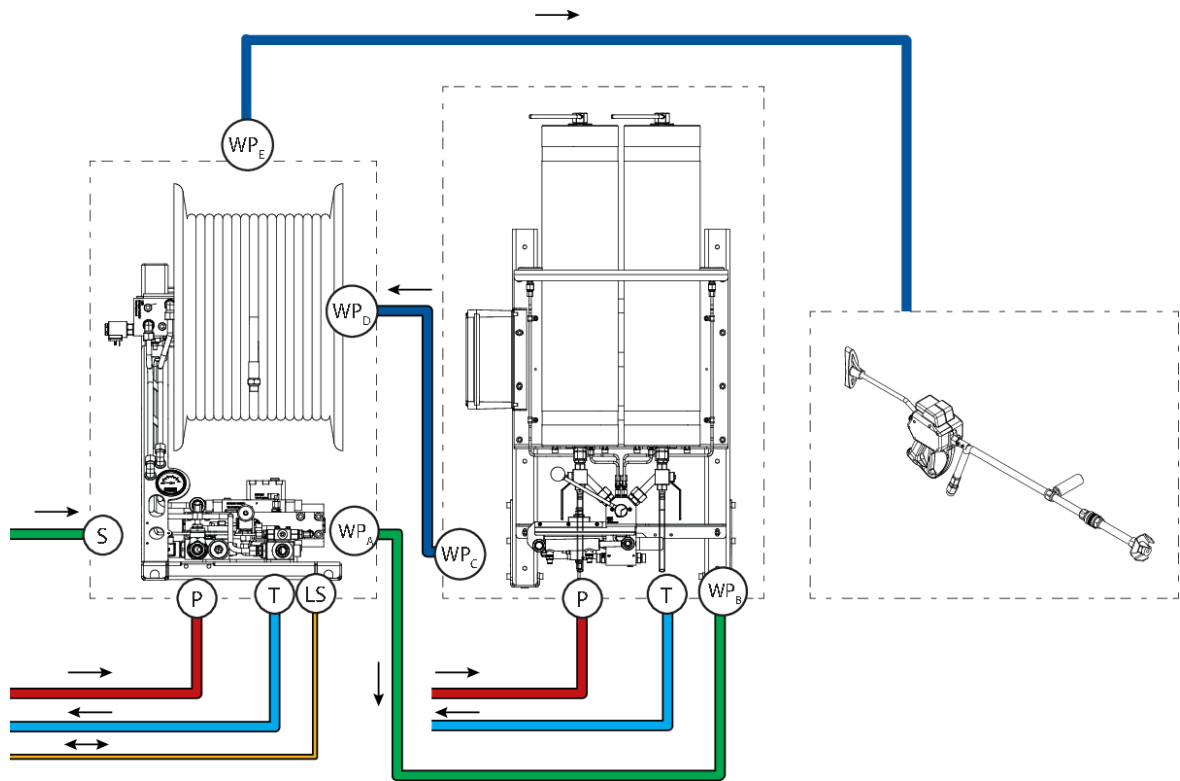
Model	Dimensions, mm (in)		
	a	b	c
HAC-320-2x20	min 800 (31.5)	min 1,900 (74.8)	1,328 (52.3)

2. CONNECTIONS



Model	Hydraulic Connections		
	Pressure line, P	Return line, T	LS line, LS
HAC-320-2x20	BSPP 3/4	BSPP 1	BSPP 1/4

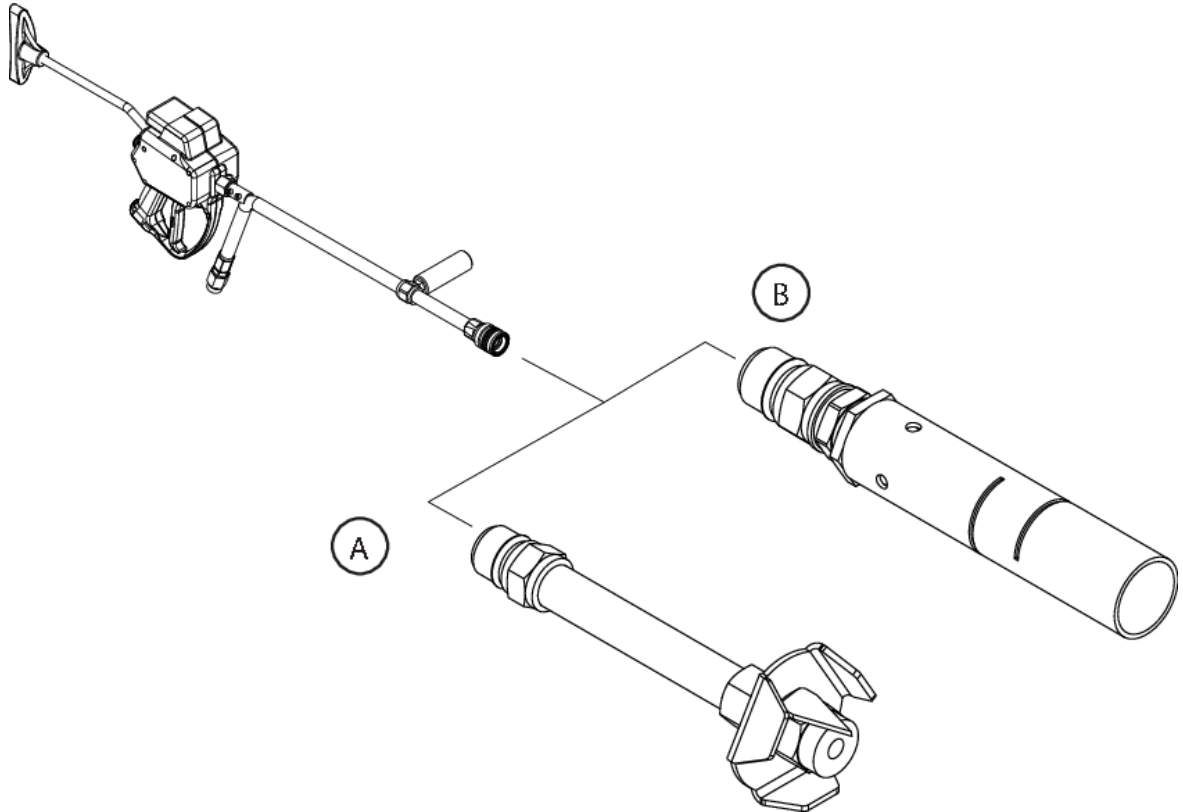
Model	Water Connections						
	Input, S	Output, WP _A	Output, WP _B	Output, WP _C	Output, WP _D	Output, WP _E	Drain line, D
HAC-320-2x20	BSPP 1	BSPP 1/2	BSPP 1/2	BSPP 1/2	BSPP 1/2	BSPP 1/2	R3/4-19



Model	Hydraulic Connections		
	Pressure line, P	Return line, T	LS line, LS
HAC-320-2x20	BSPP 3/4	BSPP 1	BSPP 1/4

Model	Water Connections						
	Input, S	Output, WP _A	Output, WP _B	Output, WP _C	Output, WP _D	Output, WP _E	Drain line, D
HAC-320-2x20	BSPP 1	BSPP 1/2	BSPP 1/2	BSPP 1/2	BSPP 1/2	BSPP 1/2	R3/4-19

2.1 OPTIONS



A = Abrasive Cutting head

B = Foaming head, includes a foaming valve to the HAC unit

3. TECHNICAL SPECIFICATIONS

		HAC-320-2x20
DISCHARGE CHARACTERISTICS		
Cutting time steel, 16 (0.6) mm (in)	s	18-20
Cutting time wood, 60 (2.4) mm (in)	s	2-3
Cutting time concrete, 110 (4.3) mm (in)	s	80
Fluid flow max.	l/min (gpm)	50 (13.21)
Pressure max.	bar (psi)	320 (4,641)
Abrasive sand size Recomended / Max	mm (in)	0.6-0.8 (0.02-0.03) / 1 (0.04)
Abrasive tank size	liter (gal.)	2x 20 (5.28)
Power	kW	38
Pistol voltage (2 Ah)	V	12V
System voltage	V	24V
HYDRAULIC POWER REQUIREMENTS		
Flow max.	l/min (gpm)	115 (30.38)
Flow min.	l/min (gpm)	70 (18.49)
Operating pressure	Δp. bar (psi)	210 (55.48)
Pressure max.	bar (psi)	240 (63.41)
HYDRAULIC FLUID REQUIREMENTS		
Viscosity	cSt	10 200 / optimum 25 35
Temperature max.	°C(°F)	70 (158)
Filter ratio	µm	< 25
Cooling capacity requirement	kW	5
PUMPING FLUID REQUIREMENTS		
Suction head max	m (ft)	3 (9.84)
Feed pressure max.	bar (psi)	16 (232)
Water filter	mesh	80



HAC HYDRAULIC ABRASIVE CUTTING SYSTEM TECHNICAL SPECIFICATIONS



POWERED BY HYDRAULICS

Menotie 3
FI-33470 Ylöjärvi, Finland
tel: +358 3 3488 200
info@DYNASET.com



ELECTRICITY

HG Hydraulic Generator
HGV POWER BOX Variable Hydraulic
Generator System
HGV Variable Hydraulic Generator System
HWG Hydraulic Welding Generator
HGG Hydraulic Ground Power Generator



HIGH PRESSURE WATER

HPW Hydraulic High Pressure Water Pump
HPW Hydraulic Power Washer
KPL High Pressure Street Washing Unit
KPL-WEED Weed Killing Unit
SCU Surface Cleaning Unit
HPW-DUST High Pressure Dust Suppression
System
PPL High Pressure Pipe Cleaning Unit
HPW-FIRE High Pressure Firefighting System
FP Fire Fighting Piercing Kit
HDF Hydraulic Drilling Fluid Pump
JPL High Pressure Bin Washing System
HSP Hydraulic Submersible Pump



COMPRESSED AIR

HK Hydraulic Piston Compressor
HKL Hydraulic Rotary Vane Compressor
HKR Hydraulic Screw Compressor



MAGNET POWER

HMG PRO Hydraulic Magnet Generator
MAG Lift Magnet
HMAG PRO Hydraulic Magnet



VIBRATION

HVB Hydraulic Vibration Pump
HVD Hydraulic Directional Vibra
HRC Hydraulic Reversal Cylinder



POWER BOOSTING

HPI Hydraulic Pressure Intensifier
HPI-C Hydraulic Pressure Intensifier for
Cylinder



VACUUM

HCF Hydraulic Centrifugal Fan
HRVB Hydraulic Recycling Vacuum Bucket



KNOW-HOW

Hydraulic Power Take-off (PTO)
Hydraulic Power Unit Technology
HEU Hydraulic Expansion Unit
HRU Hydraulic Rescue Units
De-Icing Technology
Installation Valves
HHK Hydraulic Grinder
HV/HVY Hydraulic Winch / Winch Unit

www.DYNASET.com



[/dynaset](https://www.facebook.com/dynaset)



[/dynasetoy](https://www.youtube.com/dynasetoy)



[/Dynaset_ofcl](https://twitter.com/Dynaset_ofcl)



[/dynaset_official](https://www.instagram.com/dynaset_official)